



DFZ_XT2P Series
2W, Fixed input voltage, isolated & unregulated single output

FEATURES

- Ultra Compact SMD package
- Isolation voltage: 3KVDC
- Operating temperature range: -40 °C to +105°C
- Efficiency up to 86%
- Internal SMD construction
- No external component required
- International standard pin-out
- continuous short circuit protection

DFZ_XT2P series is specially designed for applications where an isolated voltage is required in a distributed power supply system. It is suitable for:

1. Where the voltage of the input power supply is stable (voltage variation: $\pm 10\%V_{in}$);
2. Where isolation is necessary between input and output (isolation voltage $\leq 3000VDC$);
3. Where do not has high requirement of line regulation and load regulation;
4. Such as: pure digital circuits, low frequency analog circuits, relay-driven circuits and data switching circuits.



Selection Guide

Part No.	Input Voltage (VDC)	Output		Efficiency (%Min./Typ.) @ Full Load	Max. Capacitive Load (μF)
		Output Voltage (VDC)	Output Current (mA) (Max./Min.)		
DFZ-0503-XT2P	4.5-5.5 (5VDC nominal)	3.3	400/40	74/78	220
DFZ-0505-XT2P		5	400/40	75/79	
DFZ-0509-XT2P		9	222/22	78/82	
DFZ-0512-XT2P		12	167/17	78/82	
DFZ-0515-XT2P		15	133/13	79/83	
DFZ-0524-XT2P		24	83/8	80/84	
DFZ-1203-XT2P	10.8-13.2 (12VDC nominal))	3.3	400/40	74/78	
DFZ-1205-XT2P		5	400/40	75/79	
DFZ-1209-XT2P		9	222/22	78/82	
DFZ-1212-XT2P		12	167/17	78/82	
DFZ-1215-XT2P		15	133/13	79/83	
DFZ-1224-XT2P		24	83/8	80/84	
DFZ-1505-XT2P	13.5-16.5 (15VDC nominal)	5	400/40	75/79	
DFZ-1512-XT2P		12	167/17	78/82	
DFZ-1515-XT2P		15	133/13	79/83	
DFZ-1524-XT2P		24	83/8	80/84	
DFZ-2403-XT2P	21.6-26.4 (24VDC nominal)	3.3	400/40	74/78	
DFZ-2405-XT2P		5	400/40	75/79	
DFZ-2409-XT2P		9	222/22	78/82	
DFZ-2412-XT2P		12	167/17	78/82	
DFZ-2415-XT2P		15	133/13	79/83	
DFZ-2424-XT2P		24	83/8	82/86	

Input Specifications

Item	Operating Conditions	Min.	Typ.	Max.	Unit
Input Current (full load / no-load)	5V input	--	506/30	--	mA
	12V input	--	212/25	--	
	15V input	--	169/18	--	
	24V input	--	105/15	--	

The information and specifications contained in this data sheet are believed to be correct at time of publication. However, ZimTec Electronics accepts no responsibility for consequences arising from printing errors or inaccuracies. Specifications are subject to change without notice. No rights under any patent accompany the sale of any such product(s) or information contained herein.

Surge Voltage (1sec. max.)	5V input	-0.7	--	9	VDC
	12V input	-0.7	--	18	
	15V input	-0.7	--	21	
	24V input	-0.7	--	30	
Reflected Ripple Current		--	15	--	mA
Input Filter	Capacitance Filter				

Output Specifications

Item	Operating Conditions	Min.	Typ.	Max.	Unit
Output Voltage Accuracy		See tolerance envelope graph (Fig. 1)			
Linear Regulation	Input voltage change: $\pm 1\%$	3.3VDC output	--	--	± 1.5
		Other output	--	--	± 1.2
Load Regulation	10%-100%load	3.3VDC output	--	18	--
		5VDC output	--	12	--
		9VDC output	--	9	--
		12VDC output	--	8	--
		15VDC output	--	7	--
		24VDC output	--	6	--
Ripple & Noise*	20MHz bandwidth	--	100	--	mVp-p
Temperature Coefficient	100% load	--	--	± 0.03	%/°C
Short Circuit Protection	Continuous, self-recovery				

Note: * Ripple and noise are measured by „parallel cable” method, please see DC-DC Converter Application Notes for specific operation.

General Specifications

Item	Operating Conditions	Min.	Typ.	Max.	Unit	
Insulation Voltage	Input-output, with the test time of 1 minute and the leak current lower than 1mA.	3000	--	--	VDC	
Insulation Resistance	Input-output, Isolation voltage 500VDC.	1000	--	--	MΩ	
Isolation Capacitance	Input-output, 100KHz/0.1V	--	20	--	pF	
Operating Temperature	3.3V/5V output	-40	--	105	°C	
	Derating when operating temperature up to 71°C, (see Fig.2).					
	Other output					Derating when operating temperature up to 85°C, (see Fig.2).
Storage Temperature		-55	--	125		
Casing Temperature Rise During Operating	Ta=25°C	--	25	--		
Hand Soldering	Welding spot is 1.5mm away from the casing, 10 seconds.	--	--	300		
Storage Humidity	Non-condensing	--	--	95	%	
Switching Frequency	100% load, nominal input voltage .	--	100	300	KHz	
MTBF	MIL-HDFK-217F@25°C	3500	--	--	K hours	

Physical Specifications

Casing Material	Epoxy resin (UL94-V0)
Dimensions	12.70*11.20*7.25mm
Weight	1.5g (Typ.)
Cooling	Free convection

EMC Specifications

EMI	Conducted emission	CISPR22/EN55022 CLASS B (see Fig.4 for recommended circuit)
	Radiated emission	CISPR22/EN55022 CLASS B (see Fig.4 for recommended circuit)
EMS	Electrostatic discharge	IEC/EN61000-4-2 Contact $\pm 8KV$ perf. Criteria B

Product Characteristic Curve

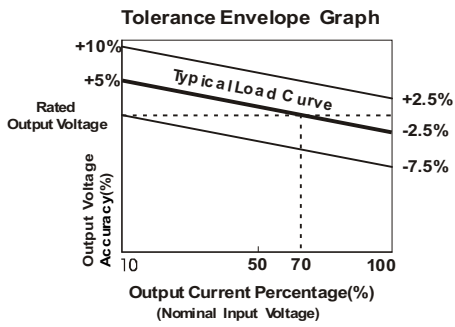


Fig. 1

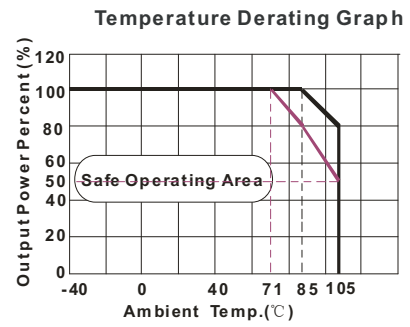
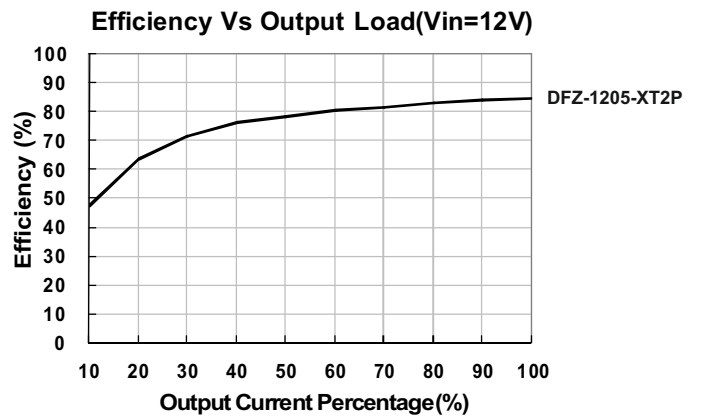
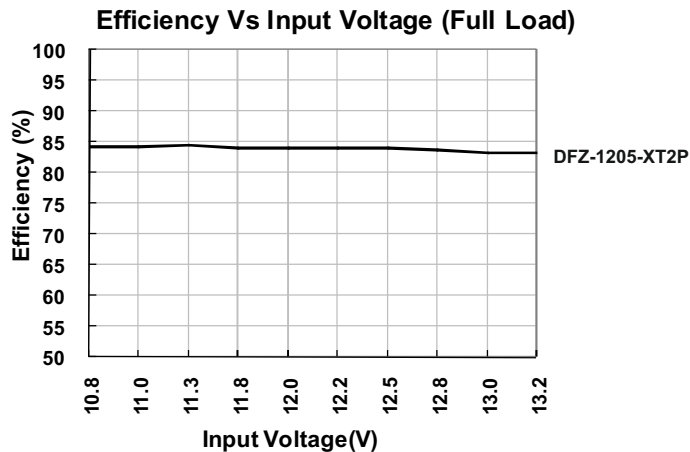
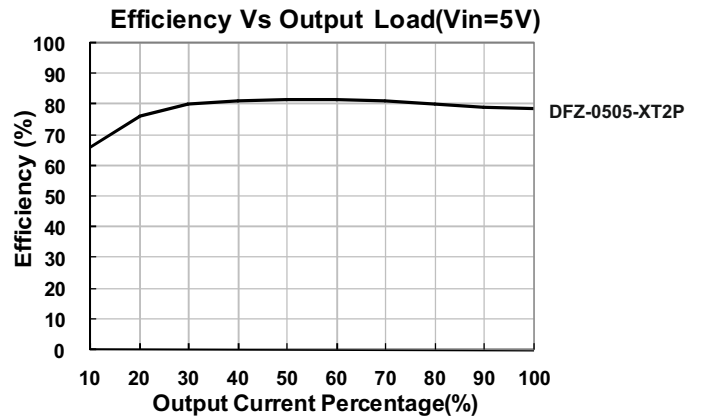
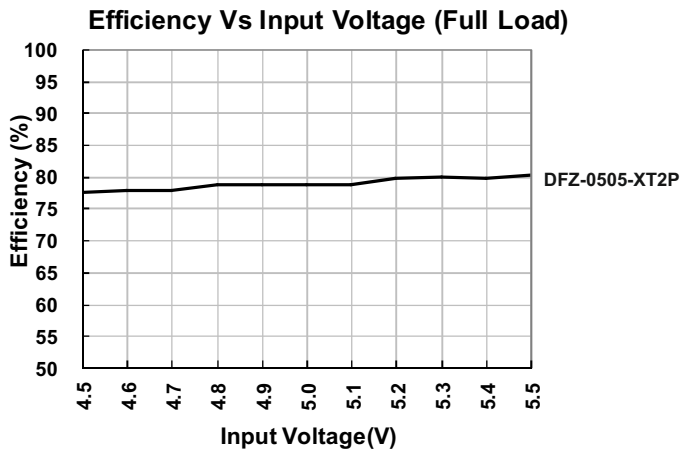
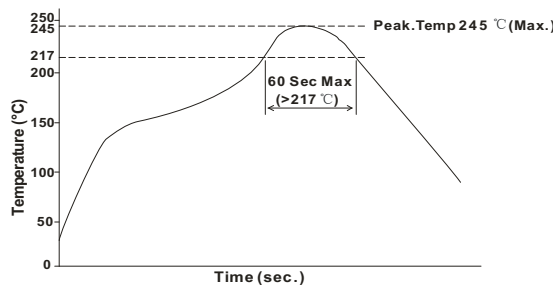


Fig. 2



Specific reflow soldering process can refer to IPC/JEDEC J-STD-020D. The recommended reflow soldering profile of our products is as below:
 Note: the profile is only suitable for hot air reflow soldering.



Design Reference

1. Typical application

If it is required to further reduce input and output ripple, a filter capacitor can be connected to the input and output terminals, see Fig.3. Moreover, choosing suitable filter capacitor is very important, start-up problems may be caused by too large capacitance. To ensure the modules running well, the recommended capacitive load values as shown in Table 1.

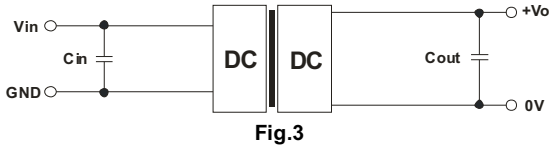


Fig.3

Recommended capacitive load value table (Table 1)

Vin(VDC)	Cin(μ F)	Vo (VDC)	Cout(μ F)
5	4.7	3.3	10
12	2.2	5	10
15	2.2	9	4.7
24	1	12	2.2
--	--	15	1
--	--	24	0.47

It is not recommended to connect any external capacitor when output power is less than 0.5W.

2. EMC typical recommended circuit (CLASS B)

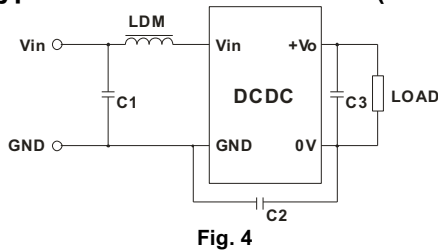


Fig. 4

Input voltage (VDC)	5/12/15/24
C1	4.7 μ F /50V
C2	--
C3	Refer to the Cout in Fig.3
LDM	6.8 μ H

Note: 1. DFZ-2424-XT2P is subject to C2 (C2 : 470pF/3KV).

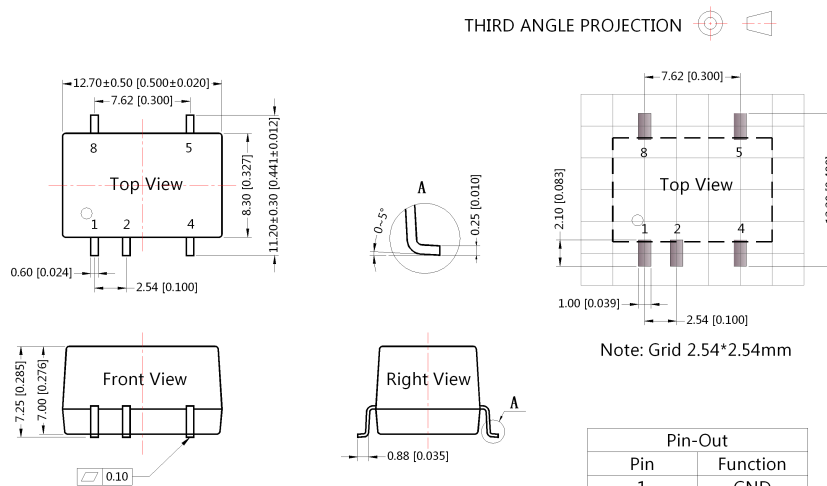
2. It is not needed to add the component in the peripheral circuit when parameter with the symbol of "--".

3. Output load requirements

To ensure the module work efficiently and reliably, during the operation, the min. output load should be no less than 10% of the full load. If the actual output power is low, please connect a resistor to the output terminal in parallel, with a recommended resistance which is 10% of the rated power, and derating is required during operation.

4. For more information please find DC-DC converter application notes on www.zimtec-electronics.de

Dimensions and Recommended Layout



Note:
Unit: mm[inch]
Pin section tolerances: $\pm 0.10[\pm 0.004]$
General tolerances: $\pm 0.25[\pm 0.010]$

Note:

1. If the product is operated out of the min. load requirement, the product performance may not meet all parameter indexes in this datasheet;
2. The max. capacitive load offered is tested at nominal input voltage and full load;
3. Unless otherwise specified, parameter indexes in this datasheet is measured under the conditions of $T_a=25^{\circ}\text{C}$, humidity<75% with nominal input voltage and rated output load;
4. All testing methods in this datasheet are based on our Company's corporate standards;
5. The parameter indexes above are for the modules listed in this datasheet, for non-standard module's parameter indexes, please contact our technicians for specific information;
6. We can provide custom design;
7. Specifications are subject to change without prior notice.

ZimTec Electronics GmbH

Kirchstraße 5-6, 39606 Osterburg, Germany

E-mail: info@zimtec-electronics.de

Web: www.zimtec-electronics.de

Last Update: 18.May.2015