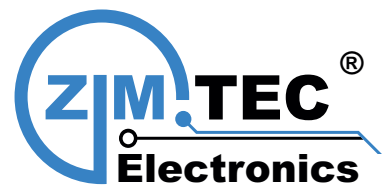


# SMB SERIES

HIGH CURRENT SURFACE-MOUNT WIRE-WOUND BEADS

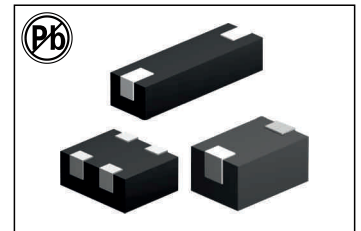


## FEATURES:

- High Frequency Design
- Lower DCR permits High Idc
- EMI Suppression
- Lead free versions
- RoHS compliant
- Excellent Thermal Stability

## COMMON APPLICATIONS:

- Modems PDP. LCD TVs convertor
- Mobile Radios DC/DC convertor
- Cordless Telephones Car radios
- Global Positioning Systems
- Wireless Communications Equipment
- Networking System,xDSL Filter
- Computer Products and Peripherals



## STANDARD SPECIFICATIONS

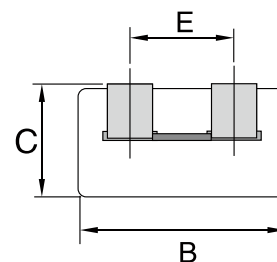
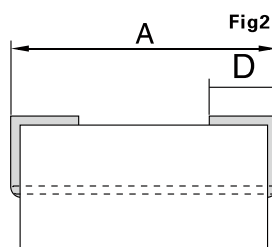
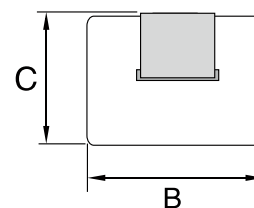
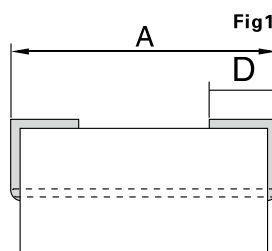
Part Number	IMPEDANCE ( $\Omega$ )		DCR ( $m\Omega$ )	IDC (A)	DIMENSIONS(mm)					Fig Number
	25MHz	100MHz			A	B	C	D	E	
SMB302520M	20	30	0.8	6	$3.0 \pm 0.15$	$2.5 \pm 0.15$	$2.0 \pm 0.15$	$1.15 \pm 0.15$		Fig1
SMB473029M	30	47	0.8	6	$4.7 \pm 0.15$	$3.0 \pm 0.15$	$2.9 \pm 0.15$	$1.5 \pm 0.2$		
SMB903029M	33	45	1.2	6	$9.0 \pm 0.15$	$3.0 \pm 0.15$	$2.9 \pm 0.15$	$1.5 \pm 0.2$		
SMB403025M	70	94	0.8	6	$4.0 \pm 0.15$	$3.1 \pm 0.15$	$2.6 \pm 0.15$	$1.35 \pm 0.2$		
SMB853025M	60	90	1.2	6	$8.5 \pm 0.15$	$3.1 \pm 0.15$	$2.6 \pm 0.15$	$2.0 \pm 0.2$		
SMB488031M	68	100	0.6	6	$8.0 \pm 0.15$	$4.8 \pm 0.15$	$3.1 \pm 0.15$	$1.5 \pm 0.2$		Fig2
SMB275647M	22	38	0.8	6	$4.76 \pm 0.15$	$5.59 \pm 0.15$	$2.72 \pm 0.15$	$1.46 \pm 0.15$	$2.5 \pm 0.15$	

Note: 1. K=  $\pm 10\%$ , M=  $\pm 20\%$  DIMENSIONS:mm

## TECHNICAL INFORMATION:

## PHYSICAL CHARACTERISTICS:

- Impedance Testing: HP4191A,  
RDC: QuadTech 1880 Milliohm meter
- Solderability 75% of the terminal electrode shall be covered
- Operating temperature: -25 °C to +85 °C
- Storage Temperature: -55 °C to +125 °C
- Solder methods: Wave, Reflow



Note: All specifications subject to change without notice.

ZimTec Electronics GmbH

Franz-Mehring-Weg 2, 39606 Osterburg, Germany

E-mail : info@zimtec-electronics.de

Web : www.zimtec-electronics.de

Last Update : 01.Jun.2015